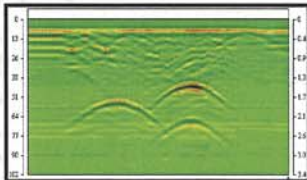
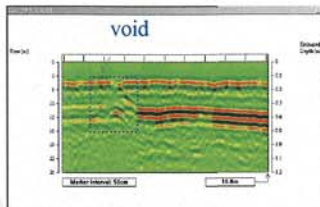




Building Diagnostic Consultants Limited
香港工程質量檢測中心有限公司

Structural Diagnostic 結構勘探



Ground Penetration Radar

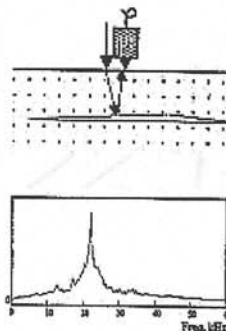
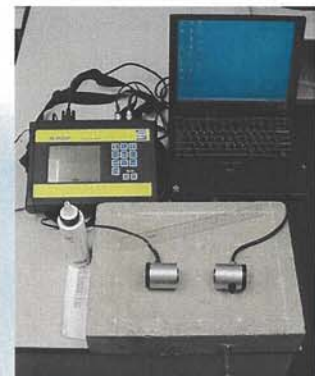
Pavement evaluation
Reinforcement evaluation and detection
Pipe and cable detection and mapping



Ultrasonic Concrete Test

Detection of the presence and of cracks, voids and other defects

It is a measurement of the velocity of ultrasonic pulse of vibrations passing through concrete and determines the elastic stiffness and mechanical strength.



Impact Echo Test (IET)

Identify the existing crack at beam and slab connection (length of the crack)



Used for inspection as well as for quality assurance purpose

Tel: (852) 2429-8622
Webpage: www.bdc.com.hk

Fax: (852) 2429-2075
E-mail: info@bdc.com.hk



Building Diagnostic Consultants Limited
香港工程質量檢測中心有限公司

Structural Diagnostic 結構勘探

In-situ Strength Test- Adhesive and Concrete Surface Hardness

現場強度測試—黏著力、壓應力

Pull Off Test/Bond Test 黏著力測試
 Schmidt Test – Rebound Hammer Test 回彈測試



Rebound Hammer Test – Measure the surface hardness of the concrete
 利用回彈測試—量度表面混凝土硬度



Pull Off Test – Measure the adhesive strength of the tiling system.
 拉力測試—量度物料之間的黏著力



Bond Test – Measure the adhesive strength and the tensile strength of the overlay
 利用黏著力測試—量度覆蓋料的黏著力表面抗拉力

Canopy Inspection

簷篷檢測

Reinforcement Radar Scan and Covermeter Survey – To survey the existing steel rebar locations and concrete cover of the canopy

雷達探測與混凝土覆蓋厚度量度 – 探測混凝土簷篷內的鋼筋位置，與混凝土的覆蓋厚度



Carry out 100mm coring at the canopy. Measure and record the condition of the exposing reinforcements

在簷篷的表面進行100毫米鑽孔，記錄已暴露鋼筋的種類，直徑，生銹程度，生銹種類和橫切面的完整性。



Cover Measurement, Rebar Size Checking and Reinforcement Corrosion Detection

混凝土面層測厚，鋼筋直徑勘察和混凝土內的鋼筋生銹度測試

Cover Meter Detection 混凝土面層厚度勘察
 Half-cell Potential Measurement of Concrete 半電池電壓及電阻測試



Half-cell Potential Measurement on the concrete.
 利用半電池電壓及電阻測試
 勘察混凝土內的鋼筋生銹度

Cover Meter Detection
 混凝土面層厚度勘察，為混凝土內的鋼筋定位，並量度鋼筋的直徑



Tel: (852) 2429-8622
 Webpage: www.bdc.com.hk

Fax: (852) 2429-2075
 E-mail: info@bdc.com.hk