

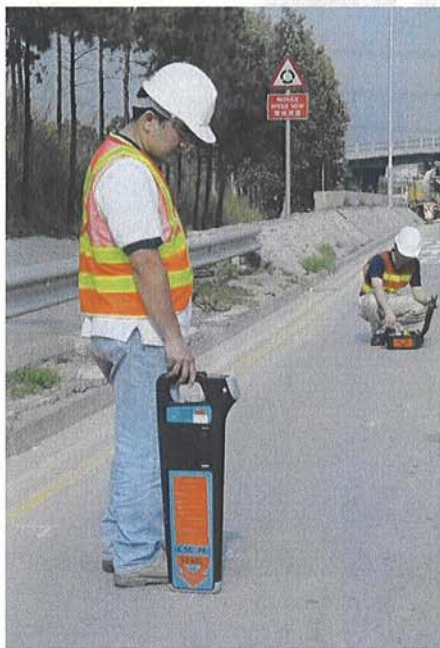
Utilities Mapping 地下電纜及喉管測定

Identification of the alignment and the depth of underground electricity cables and pipes is necessary to perform before excavation of the ground for preventing the damaging of the underground services, causing serious injury and complying with the Electricity Supply Lines (Protection) Regulation.

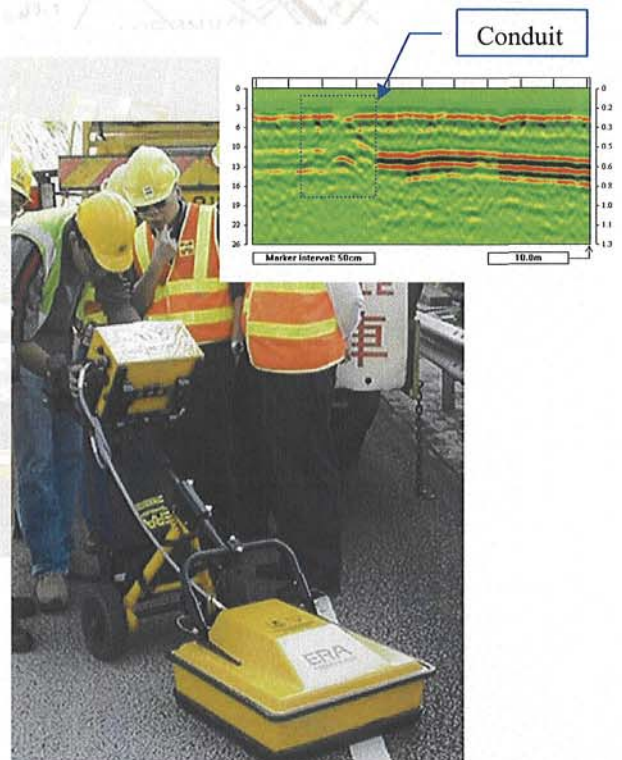
We provide **Cable Detection Survey** for locating all kinds of underground services utilities including the metallic pipe, electricity cable and concrete conduit as well.

根據法例《供電電纜(保護)規例》規定，在挖掘前，必須測定地下電纜、喉管的準線及深度、電纜引致危險。

我們能為你提供雷達合資格人士進行勘察和電纜喉管勘察，測定地下設施，包括電纜、金屬及非金屬喉管或水渠。



Underground Utilities Detection by using Cable Detection Survey at Au Tau
地底設施勘察 (攝於凹頭)



Underground Conduit Detection by using Ground Penetrating Radar Survey at Tsing Yi
地底水渠勘察 (攝於青衣)

Building Diagnostic Consultants Limited 香港工程質量檢測中心有限公司

Service Scope: External wall surface delamination survey & water leakage investigation, underground pipe/conduit detection, crack & void detection, structural test, tailor made tests

業務範圍： 勘察外牆飾面脫離、勘察漏水、喉管定位、金屬喉管定位、裂縫及空洞探測、結構及定造測試

Contact Number 聯絡電話：2429-8622; Fax Number 傳真號碼：2429-2075

